

ESCHENBACH

CUSTOM SOLUTIONS PROGRAM



Prescription Correctable Absorptive
Filters, Eyewear and Telescopes

Eschenbach offers a wide assortment of prescription correctable products so you can provide customized solutions for your patients. We offer prescription correction on a variety of head mounted low vision devices with a choice of lens type, color, coating and mounting position depending on the type of product selected.

There are three categories of devices included in the our Custom Solutions Program: prescription correctable filters, prescription correctable eyewear and mounted telescopes, each with their own customizable features.

Our prescription corrected absorptive filters include a choice of lens tint color, polarization, anti-reflective coating, and lens material. Our Ambelis filters are available in five standard ready-made CR-39 lens tints and can be ordered in any tint of your choice including the five tint colors found in our Solar Shield® and SolarComfort® lines with the side shields to match. In addition to our Ambelis eyewear we also have the Circuit FLEX wrap-around glasses which come in two different frame sizes and can be made to accommodate stronger refractive errors.

We also offer prescription correction in our prismatic eyewear frames, microscopes and LightSpecs® illuminated readers. Customizing these products allows you to choose from a variety of lens tint colors, anti-reflective coating and a choice of lens material.

Eschenbach offers customized mounting for its Keplerian and Galilean telescopes as well. Telescopes can be mounted monocularly or binocularly depending on the patients needs. They can also be mounted in 3 different positions on the frame, either in the superior, full diameter or inferior position as well as with an anti-reflective coating, choice of lens material and allow for a bifocal. Choose the carrier lens and frame that best fits your patients' needs as well.

Contact your Territory Manager or our Customer Service Department at (800) 487-5389 or info@eschenbach.com if you have any questions.

Warranty

Due to the customized nature of the products purchased through our Custom Solutions Program, all sales on prescription corrected order lenses are final. All frames and telescopes come with a 1 year warranty against manufacturer defects.

Contents

Prescription Correctable Filters

- Ambelis
- Circuit FLEX
- Acunis
- Tint Colors

Prescription Correctable Eyewear

- Prismatic Eyewear
- Microscopic Eyewear
- Illuminated Readers

Telescope Mounting

- Eschenbach Telescopes
- Designs for Vision Telescopes



Testimonials

“The fact that Eschenbach has a customized service in addition to its other products is a big help for the patients that come to our center. If we can't fit them with Eschenbach's 'off-the-shelf' products, I know we'll be able to provide a customized solution that will work for them.” - L.C., Baltimore, MD

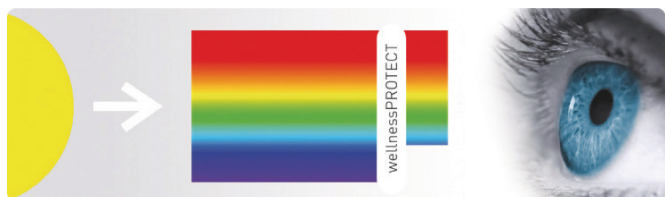
“Eschenbach's Custom mounting telescope service has done very well for my practice and more importantly, for my patients. I like the carrier frame they supply and the Keplerian telescopes are excellent for my patients that need help for distance viewing over 5 feet. As I found with one patient, the telescopes are also helpful for viewing classroom presentations. The frame and telescopes are quality products and are made to last. This customized service gives me another option to offer my 'harder to fit' patients and judging by their reaction, it works very well!” - J.D., Tuscon, AZ

Prescription Correctable Filters

Ambelis Absorptive Filters

Eschenbach's Ambelis absorptive filters block bothersome blue light thereby reducing intra-ocular glare, increasing contrast, and improving the user's viewing experience. The tinted lenses protect the eyes by blocking light 470nm in wavelength and less, cutting out most blue light.

Invisible, ultraviolet light up to 380 nm can damage the retina. This also applies to visible, short-wave and high-energy light in the blue range from 380 to approx. 490 nm. Ambelis lenses prevent this danger and provide 100% UV protection and up to 99% blue light absorption.



Eschenbach offers a number of customizable solutions in our Ambelis line of absorptive filters. There are 7 frame styles available each with top and side shields to provide protection from glare. Our two black plastic frames as well as the two stainless steel frames feature adjustable nose pads for a comfortable fit.

There are 5 off-the-shelf CR-39 lenses available: 15 Amber, 50-15 Amber, 75P Amber, and 85 Amber all of which provide 100% UVA/UVB protection and blocks bothersome blue light which causes Digital Eye Strain.

Ambelis eyewear can be prescription-corrected and made with any of our 36 Eschenbach filtering tints or a custom tint of your choice. Each pair of Ambelis eyewear includes side shields that can be tinted to match the lenses and come with a protective zippered case.

Ambelis lenses provide protection for your eyes, filter out the harmful components from sunlight and ensure glare-free vision with high contrast.



with ambelis



without ambelis

Brown Frame		Frame Only #
		1663-5416 Small
		1663-5716 Large
Black Frame		1663-5615 Small
		1663-5816 Large
Black / Brown Frame		1663-9xx XLarge
Stainless Steel Frames		1666-5617 Small
		1666-5916 Large

Frame Styles:

Product #	Description	Frame Color
1663-5416	Small, Plastic	Brown Havana Frame
1663-5716	Large, Plastic	Brown Havana Frame
1663-5615	Small, Plastic	Black Frame
1663-5816	Large, Plastic	Black Frame
1663-9xx	XLarge, Plastic	Black / Brown Frame
1666-5617	Small, Steel	Bronze Frame
1666-5916	Large, Steel	Gun Metal Frame

Frame Specs:

Product #	Frame Size	Bridge Size	Temple Size
1663-5416	54 mm	16 mm	135 mm
1663-5716	57 mm	16 mm	135 mm
1663-5615	56 mm	15 mm	130 mm
1663-5816	58 mm	16 mm	130 mm
1666-9xx	65 mm	12 mm	145 mm
1666-5617	56 mm	17 mm	140 mm
1666-5916	59 mm	16 mm	140 mm

Prescription Correctable Filters

Acunis FL-41 Filters

There are 4 Acunis FL-41 frame styles available. There are two stainless steel frames, one in brown and one in black, with top shields for extra glare protection and adjustable rubber nose pads for a comfortable fit. And there are two fashionable acetate frames, one in a brown tortoise frame with adjustable nose pads, the other in black rubberized matt finish. Both are lightweight for extending viewing.

The Acunis FL-41 filters are available in three standard tints; Light - 25% light absorption, Medium - 50% light absorption and Dark - 75% light absorption which are designed to protect against unpleasant glare and help those with light sensitivity due to migraines, traumatic brain injury and other eye conditions. They can also be customized with any of the 36 Eschenbach tints or in a color of your choice.

Frames:

Product #	Description	Frame Color
1615-5617	Stainless Steel Small	Brown Frame
1615-5916	Stainless Steel Large	Black Frame
1615-63xx	Acetate/Plastic Panto	Brown Tortoise Frame
1615-64xx	Acetate/Plastic Square	Black Frame

Frame Specs:

Product #	Frame Size	Bridge Size	Temple Size
1615-5617	56 mm	17 mm	140 mm
1615-5916	59 mm	16 mm	140 mm
1615-63xx	53 mm	20 mm	140 mm
1615-64xx	54 mm	18 mm	140 mm

Stainless Steel Frames



1615-5617 Small



1615-5916 Large

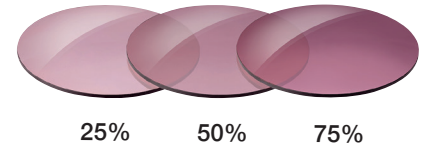
Acetate Frames



1615-63xx Panto



1615-64xx Square



Circuit FLEX

The Circuit FLEX sunglasses are an ideal choice when making prescription corrected absorptive filters for patients with higher refractive errors. The frames provide base 8 protection, but with the base 6 adapter in place, lenses can be made to accommodate stronger refractive errors while still benefiting from the close temple fit that a base 8 frame provides. The adapter can also be removed to allow for a larger lens for those patients with lower refractive errors.

The Circuit FLEX are available in large and extra-large sizes, and feature a flexible nylon frame. The rubberized nose and ear pieces provide for a comfortable fit as there are no sharp edges and the wrap around design offers full coverage protection. A zippered case and lanyard are included.

Prescription correction is available in any other tint of your choice!



H-451160247-L
Large



H-451140247-XL
Extra Large

Frames:

Product #	Description	Frame Color
H-451160247-L	Large	Black Gloss
H-451140247-XL	Extra Large	Black Matte

Frame Specs:

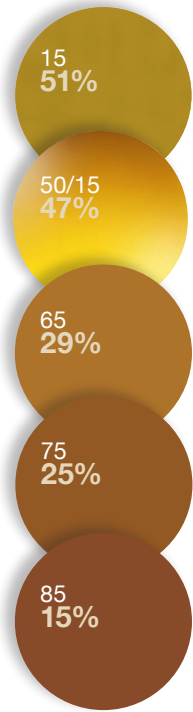
Product #	Frame Size	Bridge Size	Temple Size
H-451160247-L	55 mm	22 mm	118 mm
H-451140247-XL	60 mm	23 mm	118 mm

Prescription Correctable Filter Tints

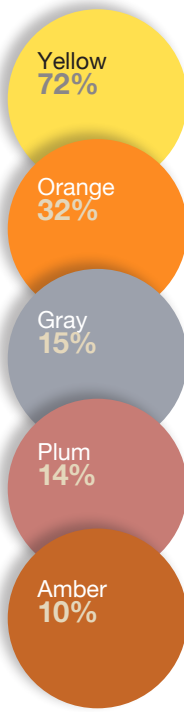
Eschenbach can provide customized tints in any color of your choice including the 36 colors to select from in our Tint Kit (#CO-4100) which can be used when customizing your patient's absorptive filters. There are 36 tint options including our 5 Ambelis tints, 5 Solar Shield® tints and 26 other popular color choices. Detailed information including Light Transmitted and Light Blocked on each tint is located below for your reference.

Tint Colors

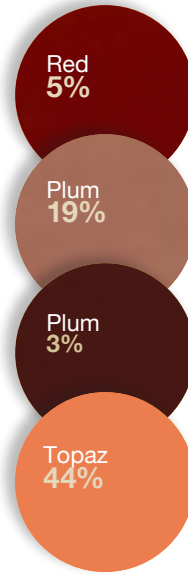
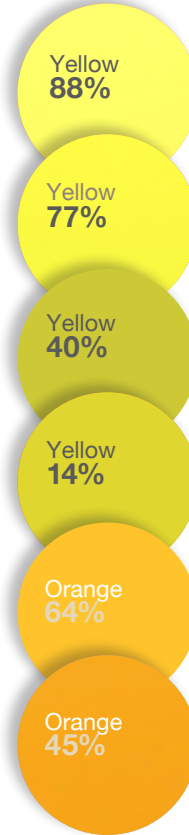
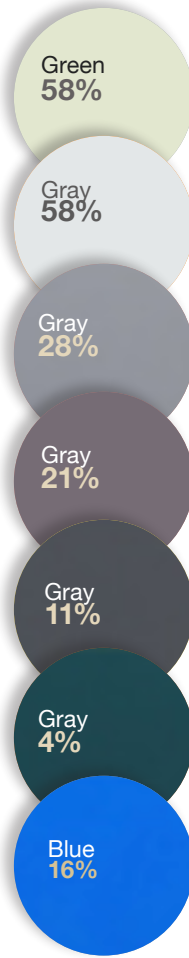
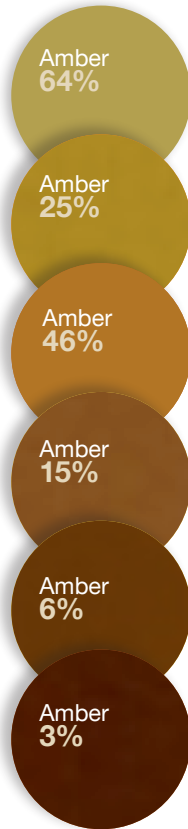
Ambelis Tints:



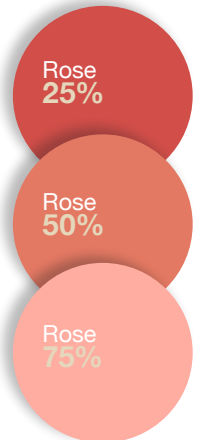
SolarShield® Tints:



Other Tints:



FL-41 Tints:



Tint colors shown with name and light transmission percentage.
P = Tint Comes Polarized

Colors may vary depending on the lens material chosen and whether polarization is added. Polarization is not available on all lens options. (Contact Customer Service for details.)

Ambelis Tint Information:

Name	Light Transmitted*	Light Blocked*
15	51%	450 nm
50/15	47%	450 nm
65	29%	450 nm
75	25%	400 nm
85	15%	450 nm

Solar Shield® Tint Information:

Name	Light Transmitted*	Light Blocked*
Yellow	72%	450 nm
Orange	32%	521 nm
Gray	15%	400 nm
Plum	14%	400 nm
Amber	10%	511 nm

Other Tint Information:

Name	Light Transmitted*	Light Blocked*
Amber	64%	400 nm
Amber	25%	400 nm
Amber	46%	400 nm**
Amber	15%	400 nm
Amber	6%	490 nm
Amber	3%	400 nm
Green	58%	400 nm**
Gray	58%	400 nm**
Gray	28%	400 nm
Gray	21%	400 nm**
Gray	11%	400 nm
Gray	4%	400 nm
Blue	16%	400 nm

Name	Light Transmitted*	Light Blocked*
Yellow	88%	400 nm
Yellow	77%	460 nm
Yellow	40%	400 nm**
Yellow	14%	400 nm**
Orange	64%	400 nm
Orange	45%	520 nm
Red	5%	560 nm
Plum	19%	400 nm
Plum	3%	400 nm
Topaz	44%	400 nm
Rose	25%	400 nm**
Rose	50%	400 nm**
Rose	75%	400 nm**

*Values based on tints being made from polycarbonate lenses. Actual colors and values may vary slightly.

**Minimum value.

Prescription Correctable Absorptive Filter Order Form (Page 1 of 2)

Account Name: _____ Account Number: _____

Patient Name: _____

Address: _____ City: _____ State: _____ Zip: _____

Contact Name: _____ Phone Number: _____

Fax Number: _____ Email: _____ Date: _____

Frame: (see pg. 3)

#1663-5416 - Ambelis Sm/Brown #1663-5816 - Ambelis Lg/Black #1666-5916 - Ambelis L/Gun Metal
#1663-5716 - Ambelis Lg/Brown #1663-9 - Ambelis XL/Bro-Blk #H-451160247-L - C.FLEX L/Blk Gloss
#1663-5615 - Ambelis Sm/Black #1666-5617 - Ambelis S/Bronze #H-451140247-XL - C.FLEX XL/Blk Matt
#1615-5617 - Acunis SS Brown #1615-5916 - Acunis SS Black #1615-63 - Acunis Plastic/Tortoise
#1615-64 - Acunis Plastic/Blk or Supplying my own frame: (If checked, fill in the below info.)

Name: _____ Model: _____ Size: _____

Tint: (see pg. 5)

Ambelis: 15 Light Amber (51%) 50-15 Gradient (47%) 65 Dark Amber (29%)
75 Darker Amber (25%) 85 *Darkest Amber (15%)
SolarShield®: Yellow (72%) Orange (32%) Gray (15%) Plum (14%) Amber (10%)

Acunis: FL-41 Light (25%) FL-41 Medium (50%) FL-41 Dark (75%)

Other Tint: Name _____ Light Transmitted % _____

Eschenbach Tint Kit #: _____ Eschenbach Tint Kit Coupon #: _____

Or: Unlisted Color: Name _____ (Sample enclosed: Yes / No) Light Transmission: _____

Additional Options: Transition Lens: (Brown / Gray) Matching Side Shields: Yes / No

Lens:

Polarized: Yes / No If yes, what color: Brown Gray (may alter tint color)

Anti-Reflective Coating: Yes / No

Lens Material: CR39 Trivex Polycarb Mid Index Hi Index

(*Only CR39 or Trivex available for Ambelis 85 tint)

Prescription Correctable Absorptive Filter Order Form (Page 2 of 2)

Rx	Sphere	Cylinder	Axis	Prism	Base	Distance PD*
Right:						Right:
Left:						Left:
Add.	Magnification	Bifo. Style	Seg. Hgt.	Base Crv.	MRP	Near PD
Right:						Right:
Left:						Left:

*Required field

Special Instructions: _____

(Check one)

Quote Only: ____

Place Order: ____

Signature: _____

Send this form to Eschenbach using the fax number or email address listed below. Eschenbach will fax or email a firm quote for all orders to the attention of the contact person on the order form. Prices are subject to change. Orders will NOT be processed until confirmation and authorization of the order is provided by the customer via phone, return fax or email. (Freight charges are not included in quote.)

Phone: (800) 487-5389 | Fax: (877) 422-7300 | Email: customerservice@eschenbach.com

Tint Survey *(Optional)*

To help us better understand the absorptive filter needs of those who are visually impaired please answer a few questions about the patient you are ordering for below:

Patient Age: _____ **Patient Primary Eye Disease:** _____

Patient Acuity: _____

Thank You!

Prescription Correctable Eyewear

Prismatic Eyewear

Eschenbach will custom correct prismatic eyewear for your patients based on their individual needs. Sphere, cylinder, prism, tints and other prescription enhancements are available for your patient.

Custom corrected prismatic eyewear is available in CR-39 lenses, with or without anti-reflection coating. The lenses are thicker near the nose than temple ("base in" prism) to facilitate binocular viewing of objects held inside the near point of convergence with magnification from +4D to +12D.

Some of the frames available are the Prismatic Bino frames which are half-eye style readers. There is a gold metal frame featuring spring-hinge temples and adjustable nose pads and a transparent frame with an open saddle bridge (recommended for higher strengths as the thickness of the lens is less conspicuous in the plastic frame).

The Premium Prism and ClearImage II frames each feature a spring-hinge temples and adjustable nose pads that allow for a comfortable fit. The larger silver frame includes a soft, open-saddle bridge and rubberized temple tips. The smaller gun-metal frame can be worn either in a full-field or half-eye position.

Microscopic Eyewear

Eschenbach uses ClearImage II® lenses from Designs for Vision, Inc. in our microscopic solutions. Prescription lens correction as well as lens tinting is available in the ClearImage II® lens itself, and any lens correction as well as frosting or occlusion is available for the balance.

Frames:

Product #	Description	Frame Color
1680-4122	Prismatic BINO, Titanium	Gold
1680-54122	Prismatic BINO, Plastic	Translucent
1681-34122	Premium Prism Small, Titanium	Gun Metal
1693-4916	Premium Prism Large, Nickel Alloy	Silver
1693-5218	ClearImage II®, Nickel Alloy	Silver



1680-4122
Prismatic BINO



1680-54122
Prismatic BINO



1681-34122
Premium Prism Small



1693-4916
Premium Prism Large



1693-5218
ClearImage II®

Frame Specs:

Product#	Frame Size	Bridge Size	Temple Size
1680-4122	41 mm	22 mm	145 mm
1680-54122	41 mm	22 mm	150 mm
1681-34122	41 mm	22 mm	145 mm
1693-4916	49 mm	16 mm	150 mm
1693-5218	52 mm	18 mm	150 mm

LightSpecs® Illuminated Reading Glasses

For those presbyopes who require readers when performing near tasks in dark or dimly lit environments, Eschenbach also offers prescription correction on our unique LightSpecs® illuminated reading glasses from Foster Grant.

LightSpecs® provide magnification as well as bright LED illumination - all in one pair of eyewear. They are available in two frame styles, Lindy (Tortoise) and Liberty (Tortoise or Black). Each pair features 2 LEDs (one on each temple) that are individually activated with an easy flick of a switch. These are powered by two flat button-sized batteries that are pre-installed and last up to 50 hours.

Each pair of LightSpecs® comes with a hard protective case which includes four extra batteries.



FGX-1011356-xxx
Liberty Black



FGX-1011223-xxx
Liberty Tortoise



FGX-1012188-xxx
Lindy Tortoise

Frames:

Product #	Frame Color	Style
FGX-1011356-xxx	Black	Liberty
FGX-1011223-xxx	Tortoise	Liberty
FGX-1012188-xxx	Tortoise	Lindy

Frame Specs:

Product	Frame Size	Bridge Size	Temple Size
FGX-1011356-xxx	50 mm	19 mm	152mm
FGX-1011223-xxx	50 mm	19 mm	152mm
FGX-1012188-xxx	50 mm	17 mm	148mm

Prescription Correctable Eyewear Order Form - Prism / Microscope

Account Name: _____ **Account Number:** _____

Patient Name: _____

Address: _____ **City:** _____ **State:** _____ **Zip:** _____

Contact Name: _____ **Phone Number:** _____

Fax Number: _____ **Email:** _____ **Date:** _____

Product:		Lens:		Coating:		Eye:
#1680-4122 - Prismatic BINO	<input type="checkbox"/>	CR-39 (only)	1.67 <input type="checkbox"/> 1.74 <input type="checkbox"/>	Anti-Reflective Coating: Yes <input type="checkbox"/> / No <input type="checkbox"/>		OD: _____ OS: _____
#1680-54122 - Prismatic BINO	<input type="checkbox"/>					
#1681-34122 - Prem. Prism - Sm	<input type="checkbox"/>					
#1693-4916 - Prem. Prism - Lg	<input type="checkbox"/>					
#1693-5218 - ClearImage II® Microscope	<input type="checkbox"/>	Optical Glass (only)				
Rx	Sphere	Cylinder	Axis	Prism	Base	Distance PD*
Right:						Right:
Left:						Left:
Add.	Magnification	Bifo. Style	Seg. Hgt.	Base Crv.	MRP	Near PD
Right:						Right:
Left:						Left:

*Required field

Special Instructions: _____

(Check one)
Quote Only: ____

Place Order: ____

Signature: _____

Send this form to Eschenbach using the fax number or email address listed below. Eschenbach will fax or email a firm quote for all orders to the attention of the contact person on the order form. Prices are subject to change. Orders will NOT be processed until confirmation and authorization of the order is provided by the customer via phone, return fax or email. (Freight charges are not included in quote.)

Phone: (800) 487-5389 | Fax: (877) 422-7300 | Email: customerservice@eschenbach.com

Prescription Correctable Eyewear Order Form - Illuminated Readers

Account Name: _____ **Account Number:** _____

Patient Name: _____

Address: _____ **City:** _____ **State:** _____ **Zip:** _____

Contact Name: _____ **Phone Number:** _____

Fax Number: _____ **Email:** _____ **Date:** _____

Product:		Lens:		Coating:		
#FGX-1011356 - Liberty - Blk. <input type="checkbox"/>		CR39 <input type="checkbox"/>	Mid Index <input type="checkbox"/>	Anti-Reflective Coating: Yes <input type="checkbox"/> / No <input type="checkbox"/>		
#FGX-1011223 - Liberty - Tort. <input type="checkbox"/>		Trivex <input type="checkbox"/>	Hi Index <input type="checkbox"/>			
#FGX-1012188 - Lindy - Tort. <input type="checkbox"/>		Polycarb <input type="checkbox"/>				
Rx	Sphere	Cylinder	Axis	Prism	Base	Distance PD*
Right:						Right:
Left:						Left:
Add.	Magnification	Bifo. Style	Seg. Hgt.	Base Crv.	MRP	Near PD
Right:						Right:
Left:						Left:

*Required field

Special Instructions: _____

(Check one)

Quote Only: _____

Place Order: _____

Signature: _____

Send this form to Eschenbach using the fax number or email address listed below. Eschenbach will fax or email a firm quote for all orders to the attention of the contact person on the order form. Prices are subject to change. Orders will NOT be processed until confirmation and authorization of the order is provided by the customer via phone, return fax or email. (Freight charges are not included in quote.)

Phone: (800) 487-5389 | Fax: (877) 422-7300 | Email: customerservice@eschenbach.com

Eschenbach Customized Telescope Mounting

Eschenbach Telescopes

Eschenbach offers a number of telescopic solutions that can be custom mounted for your patients. We carry a variety of Keplerian and Galilean telescopes that can be mounted binocularly or monocularly depending on the patient's needs. We also provide custom mounting for non-Eschenbach telescopes.

For bioptic telescope mounting, Eschenbach will mount telescopes no closer than 3mm from the edge of the spectacle frame (or 10mm down from top of lens to center of scope).

For proper scope alignment, inclination or declination will be incorporated at 2° per millimeter that the telescope is centered above or below the distance pupil as marked. Should you have any questions, contact Eschenbach or your local Territory Manager at (800) 487-5389.

When ordering, practitioners should be advised that incomplete information regarding mounting job specifications could lead to delays in job completion and incorrect mounting. Practitioners are expected to complete the mounting order form fully for all jobs requested. Slight deviations in telescope centering and height should be expected.

If the frame selected to carry the mounted telescope is not supplied by Eschenbach, it is advised that it be rigid yet adjustable (wire with double bridge, zyl with adjustable nose pads, end pieces that allow pantoscopic and retroscopic angling, etc.) is provided so that the final fitting can compensate for slight deviations. Eschenbach's 1693 frame is ideal as a telescope carrier frame for mounting custom jobs.

If you are submitting finished eyewear, you should have all necessary markings intact, carrier lenses in place, and frames comfortably adjusted prior to forwarding to Eschenbach. CR-39 is the lens material of choice for carrier lenses. Eschenbach requires that finished eyewear be submitted with a completed mounting form.

Eschenbach Carrier Frame

The Eschenbach #1693 Carrier Frame is designed for mounting Eschenbach's Galilean and Keplerian monocular telescopes. The unisex frame is made of titanium and nickel and has spring-hinged temples for extra comfort. The lens includes a grid that makes marking the telescope mounting position easier than ever. The frame also includes a soft saddle nose bridge that ensures the glasses rest securely on the nose, and do not slide down when the telescope is mounted. There are three sizes available to make sure the frame fits the patient comfortably.



1621 Afocal Galilean Telescope



1622-5 Afocal Galilean Telescope



1623 Wide-Field Galilean Telescope



1673-x Focusable Keplerian Telescope



KS-T Focusable Monocular Telescope



1693 Frame

Frame Sizes:

Product #	Frame Size	Bridge Size	Temple Size
1693-4916	49 mm	16 mm	150 mm
1693-5116	51 mm	16 mm	150 mm
1693-5218	52 mm	18 mm	150 mm

Measuring and Marking Custom Mounted Telescopes

Binocular Telescope Mounting for Distance

1. Measure monocular pupillary distances for each eye.
2. Using a lens marking pen/pencil, dot the pupils of each eye at distance gaze (Major Reference Point – “MRP”).
3. Determine the height at which the telescope will be mounted in the spectacles, measuring from the bottom edge of the lens to the center of the telescope (bioptic superior, full diameter, bioptic inferior). If not specified, Eschenbach will mount as high in the spectacle lens as possible.



Binocular Telescope Mounting for Near

1. Measure monocular pupillary distances for each eye.
2. Using a lens marking pen/pencil, dot the pupils of each eye at distance gaze (MRP).
3. Measure the distance from the spectacle lens to the object to be viewed at eye level.
4. Measure the linear distance from the spectacle lens to the object to be viewed in the position the object is viewed.
5. Where possible, using a lens marking pen/pencil, dot the near pupils of the user when viewing the object. To properly mark these pupils, the dispenser should position his/her eye in the user's line of sight at the object level, looking up at spectacles of the wearer.
6. To properly mark these pupils, the dispenser should place loose-leaf reinforcements/leaf rings or other removable adhesive rings over the near pupil markings to ensure that the patient is viewing the near point object through the center of the holes binocularly.



Mounted in Inferior Position

Monocular Telescope Mounting for Distance

1. Measure monocular pupillary distance for the eye over which the telescope will be mounted.
2. Using a lens marking pen/pencil, dot the pupil of the eye over which the telescope will be mounted, at distance gaze (MRP).
3. Determine the height at which the telescope will be mounted in the spectacles, measuring from the bottom edge of the lens to the center of the telescope (bioptic superior, full diameter, bioptic inferior). If not specified, Eschenbach will mount as high in the spectacle lens as possible.



Monocularly Mounted in Full Diameter Position

Accessories

Reading Caps can be used to allow a telescope (particularly an afocal one) to be used for near viewing. They are designed to fit over the lens and be easily removed when near viewing is no longer needed. All of our reading caps can be customized and are available off-the-shelf in certain powers.

The 1621-x Galilean Afocal Telescope Reading Caps allow for near vision tasks and are designed for mounting on the 1621 Galilean Telescope. They are available off-the-shelf in powers of 3D, 4D, 5D, 6D, 8D, 10D, 12D and 16D and can also be used with the 1673 Keplerian Telescopes by using an adapter. Contact Customer Service for adapter numbers.



1621-x Reading Caps

The 1623-x Galilean Snap-on hinged Reading Caps are compatible with the 1623 Wide-field Galilean Telescope. The lens can be quickly flipped up and out of the way when it is not needed and is available off-the-shelf in powers of 3D, 4D, 5D, 6D, 8D, 10D and 12D. (Caps for the KS-T are unavailable.)



1623-x Reading Caps

Eschenbach Telescope Mounting Order Form (Page 1 of 2)

Account Name: _____ Account Number: _____

Patient Name: _____

Address: _____ City: _____ State: _____ Zip: _____

Contact Name: _____ Phone Number: _____

Fax Number: _____ Email: _____ Date: _____

Product:
 Eschenbach Telescope Model # _____ or Telescope to be Provided or Eschenbach to Supply

Mounting:
 Telescope Mounted: OD OS OU
 Mounting Position: Full Diameter Superior Bioptic Inferior Bioptic
(center, aimed straight) (aimed up) (aimed down)
 (Note: Mounting full diameter may partially occlude a portion of bifocal)
 Pupil Center Height*: Right: _____ Monocular Distance PD*: Right: _____
 Left: _____ Left: _____

Rx	Sphere	Cylinder	Axis	Prism	Base	Distance PD*
Right:						Right:
Left:						Left:
Add.	Magnification	Bifo. Style	Seg. Hgt.	Base Crv.	MRP	Near PD
Right:						Right:
Left:						Left:

Carrier Lens:
 Polarized: Yes / No If yes, what color: Yellow Brown Gray
 A/R Coating: Yes / No
 Transition Lenses: Yes / No If yes, what color: Yellow Brown Gray
 Lens Material: CR39 Trivex Polycarb Mid Index Index 1.60 1.67

Telescope Rx:
 OD: _____ A/R Coating: Yes / No
 OS: _____ Note: We can also Rx telescope systems: 1634-xx / 1636-xx

Eschenbach Telescope Mounting Order Form (Page 2 of 2)

Frame:

Eschenbach frame #1693 Matte Silver (all sizes supplied with 150 mm temples, can be bent to 135 mm)

Frame Size: 49-16 52-18 51-16

Other frame being supplied: Frame Name: _____ Color: _____ Size: _____

Accessories:

Reading Cap: Yes / No Off-the-Shelf Number: _____ Custom Power: _____

*Required field

Telescope will be used for: _____

Special Instructions: _____

(Check one)

Quote Only: ____

Place Order: ____

Signature: _____

Send this form to Eschenbach using the fax number or email address listed below. Eschenbach will fax or email a firm quote for all orders to the attention of the contact person on the order form. Prices are subject to change. Orders will NOT be processed until confirmation and authorization of the order is provided by the customer via phone, return fax or email. (Freight charges are not included in quote.)

Phone: (800) 487-5389 | Fax: (877) 422-7300 | Email: customerservice@eschenbach.com

Designs for Vision Customized Telescope Mounting

Designs for Vision Telescopes

Designs for Vision Bioptic Telescopes are generally mounted in the carrier lens so that the optic center of the ocular lens is 11mm below the top of the lens. They are laterally decentered to the patient's PD and have a standard drilling angle of inclination of 20° upward from the horizontal plane. Superior position and full diameter mounting at any angle, however, can be special-ordered. Bioptics can be ordered in beige or black housing (must be specified on the order form).

When using a bifocal carrier lens, care must be taken in the placement of the bifocal segment. This is not as important if the patient is going to be using only the telescope and the bifocal segment, but if the patient is to be able to see at a distance through the carrier lens, at least 8 - 10mm should be available between the telescope and the top of the bifocal. Thus, a frame with adequate vertical dimension must be chosen for the patient. The Eschenbach #1693 frame is ideally suited for this purpose. (See page 10 for details on this frame.)

When binocular telescopes are prescribed, a reading cap may be used only monocularly, since the telescopes will not be aligned for the near working distance. The cap is generally placed over the eye with the better acuity, or in the case of equal acuities, over the dominant eye.

Designs for Vision Spiral Galilean Telescopes

The Spiral Galilean Telescope was designed to provide focusability in a Galilean telescope. The ability to focus these telescopes without the need of reading caps provides a flexibility in Galilean design not previously available. All of the Spiral Galilean Telescopes allow the patient to focus from a near point of at least 12 inches to infinity.

Fitting

All of the Spiral Galilean Telescopes can be mounted in either the full diameter (centered, aimed straight) or in the bioptic position (aimed up) mounted as high as possible above the geometric center of the frame. As the diameter of the eye pieces of the Spiral Galilean Telescopes differ, height placement of the system selected (e.g., 2.2X, 3.0X or 4.0X) must be checked by the doctor with the individual patient.

The patient's distance prescription can be incorporated into either the telescope, the carrier lens, or both. For best results, it is recommended that this be done. It should also be noted that a bifocal carrier lens can be prescribed for the patient. The telescopic units can be supplied with either a black, or beige colored housing. For patients with a glare or light sensitivity problem, a tint may also be incorporated into the carrier, the telescope, or both.

Galilean Telescopes

Product #	Description	Mag.	Field of View	Range of Focus
DVI-2.2 BIO1	Bioptic for Distance (afocal)	2.2x	12°	Infinity
DVI-2.2 BIO2	Bioptic for Distance (afocal)	2.2x	11°	Infinity
DVI-2.2 FDTS	Bioptic for Distance (afocal)	2.2x	16°	Infinity
DVI-2.2 SGTS	Bioptic for Distance (focusable)	2.2x	11°	12" to Infinity
DVI-3.0 SGTS	Bioptic for Distance (focusable)	3x	8°	8" to Infinity
DVI-4.0 SGTS	Bioptic for Distance (focusable)	4x	6°	8" to Infinity

1693 Frame



Full Diameter Galilean Telescopes
(Fixed Focus)



DVI-2.2 BIO1



DVI-2.2 BIO2



DVI-2.2 FDTS

Spiral Galilean Telescopes
(Adjustable Focus)



DVI-2.2 SGTS



DVI-3.0 SGTS



DVI-4.0 SGTS

Designs for Vision Telescope Mounting Order Form (Page 1 of 2)

Account Name: _____ Account Number: _____

Patient Name: _____

Address: _____ City: _____ State: _____ Zip: _____

Contact Name: _____ Phone Number: _____

Fax Number: _____ Email: _____ Date: _____

Product:

Telescope Model: DVI-2.2 BIO1 (fixed focus) DVI-2.2 SGTS (adjustable focus)

DVI-2.2 BIO2 (fixed focus) DVI-3.0 SGTS (adjustable focus)

DVI-2.2 FDTS (fixed focus) DVI-4.0 SGTS (adjustable focus)

Other DVI Telescope: _____

Housing Color: Beige (matches #1693 frame color)

Black (reverse telescope color)

Mounting:

Telescope Mounted: OD OS OU

Binocular Distance PD: _____ or Monocular Distance PD: R: _____ L: _____

Mounting Position: Full Diameter Bioptic Reverse Telescope
(center, aimed straight - bifocal not available) (11mm down from top, aimed up) (available in black only)

Rx:	Sphere:	Cylinder:	Axis	Prism	Base	Distance PD*
Right:						Right:
Left:						Left:
Add.	Magnification	Bifo. Style	Seg. Hgt.	Base Crv.	MRP	Near PD
Right:						Right:
Left:						Left:

Carrier Lens:

Polarized: Yes / No If yes, what color: Brown Gray (What Tint: 15% or 70%)

A/R Coating: Yes / No

Transition Lenses: Yes / No If yes, what color: Yellow Brown Gray

Lens Material: CR39 Trivex Mid Index Index

Designs for Vision Telescope Mounting Order Form (Page 2 of 2)

Telescope Rx:

OD: _____ OS: _____

Frame:

Eschenbach frame #1693 Matte Silver (all sizes supplied with 150 mm temples, can be bent to 135 mm)

Frame Size: 49-16 52-18 51-16 Other frame being supplied: Frame Name: _____ Color: _____ Size: _____**Accessories:**Reading Cap: Yes / No Custom Power: _____**Telescope will be used for:** _____**Special Instructions:** _____*(Check one)***Quote Only:** ___**Place Order:** ___**Signature:** _____

Send this form to Eschenbach using the fax number or email address listed below. Eschenbach will fax or email a firm quote for all orders to the attention of the contact person on the order form. Prices are subject to change. Orders will NOT be processed until confirmation and authorization of the order is provided by the customer via phone, return fax or email. (Freight charges are not included in quote.)

Phone: (800) 487-5389 | Fax: (877) 422-7300 | Email: customerservice@eschenbach.com



Eschenbach Optik of America, Inc.

22 Shelter Rock Lane, Danbury, CT 06810

P: (800) 487-5389 | F: (888) 799-7200 | info@eschenbach.com | www.eschenbach.com